



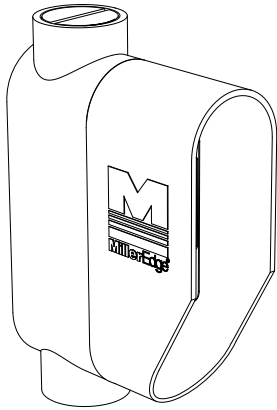
## INSTALLATION INSTRUCTIONS

# Photo Eye Conduit Enclosure Kit

MODEL: PE-CON-K10

### WARNING

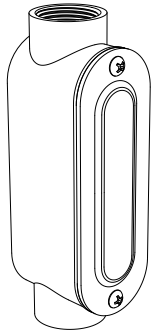
Read and understand all instructions before beginning installation. Disconnect power to motor and test upon completion. Photo optics should be installed by qualified personnel to ensure the requirements herein have been met. Keep these instructions with the installation. Always abide by local and national electrical code specifications when wiring accessories to motor controls.



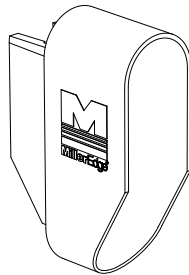
The **Photo Eye Conduit Enclosure Kit (PE-CON-K10)** pairs seamlessly with TruGuard™ (TG-R-K10) and OptiGuard™ (OG-T-K10) photo optic systems by Miller Edge. The integrated 3/4" Type-C conduit body provides a protective pathway for wires in installations using conduit while ensuring a clear connection to operator controls. This accessory features a hood designed to provide added shielding to the photo eye from sunlight, moisture, dust, and debris. With a swivel bracket for easy alignment, the Photo Eye Conduit Enclosure Kit ensures optimal positioning of an accompanying photo eye or reflector.

Please refer to your photo eye installation instructions and operator manual for detailed guidance on proper installation and connection to motor controls.

### CONTENTS



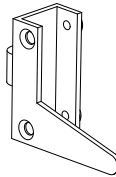
(1) Conduit body  
(1) Conduit gasket  
(1) Cover  
(2) #8-32 Pan head screws



(1) Hood



(1) Hood gasket



(1) Swivel bracket



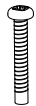
(1) Hood cap



(1) Grommet



(1) Cap



(1) #10 x 1-1/4"  
Pan head screw



(2) #8 x 1"  
Flat head screws

### REQUIRED

- Miller Edge photo optic system with installation instructions:
  - TG-R-K10: TruGuard™
  - OG-T-K10: OptiGuard™
- 3/4" male threaded conduit fitting
- 3/4" conduit
- Straps, clamps, or other for securing conduit
- Operator manual

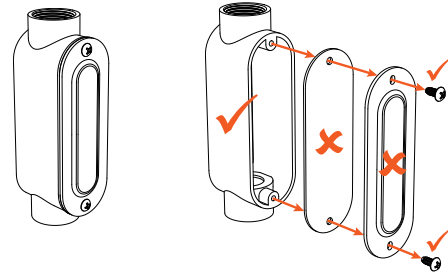
### OPTIONAL

- Teflon tape or plumber's adhesive can be applied to the conduit body cap if a water-tight seal is desired
- Self-tapping screws
- Waterproof silicone sealant

PE-CON-K10\_INST\_20230811

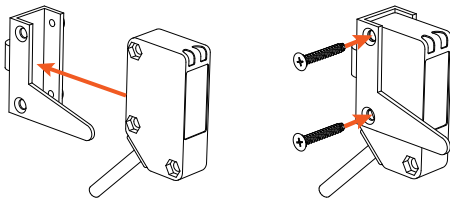
### I. PREPERATIONS

1. Run conduit and secure in the location that you want the photo eye to be located.
  - Note: If more than 6' of conduit is used a junction box located at 6' or less from the photo eye location may be needed to extend the wires.
2. Preparing the conduit body:
  - a) Disassemble the conduit body assembly.
  - b) Place the conduit body and screws aside.
  - c) Discard the cover and conduit gasket.



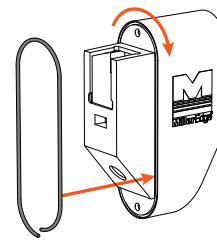
**Image 1**  
Conduit body with the included conduit gasket, cover, and (2) #8-32 pan head screws

### II. ASSEMBLY



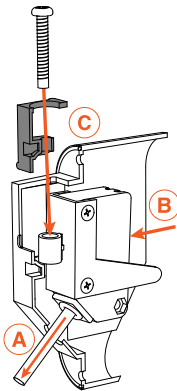
**Image 2**  
Swivel bracket assembly

3. Connect the photo eye to the swivel bracket with the "arm" positioned as shown using the (2) #8 x 1" flat head screws. Note: Screws will be tight.

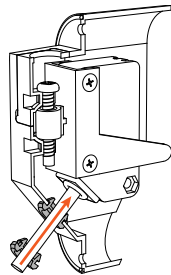


**Image 3**  
Inserting the hood gasket

4. Starting at the bottom center back of the hood, press the gasket into the recess. Stretch gently around the hood until the ends meet. After ensuring it is fully installed, trim excess gasket as needed.

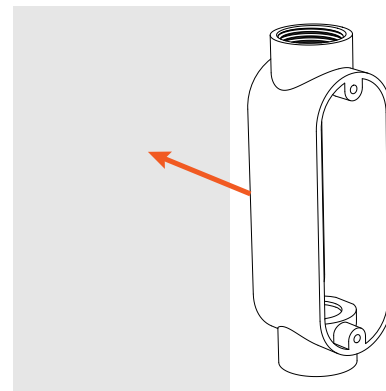


**Image 4**  
Hood assembly



**Image 5**  
Inserting the grommet

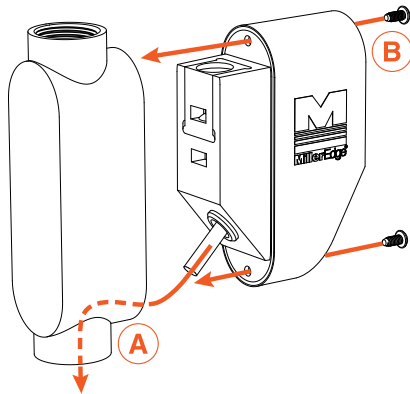
5. Route the photo eye wire through hole on the back of the hood. **Image 4A**
6. Slide the photo eye and bracket assembly into the hood. **Image 4B**
7. Slide the hood cap onto the top of the hood and secure with the (1) #10 x 1-1/4" pan head screw. Tighten lightly to allow for adjustment later. **Image 4C**
8. Pierce the center of the rubber grommet. Slide it up the photo eye wire to the hood and press into the hole. Note: Use lubricant on wire if needed. **Image 5**



**Image 6**  
Fasten the Conduit

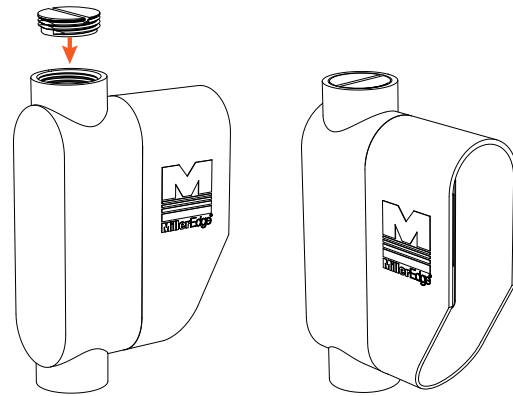
### III. INSTALLATION

1. If not done so already, determine the final location of the photo eye.
  - a) Trim any excess conduit and connect a 3/4" threaded male fitting to the end of the conduit.
  - b) Secure the conduit onto the mounting surface with straps, clamps, or other method.
  - c) Optional: Mount the conduit body to the mounting surface by drilling self-tapping screws into the conduit body and mounting surface. Apply silicone if water tightness is required.



**Image 7**  
Conduit body and hood assembly

2. Route the photo eye wire through the bottom of the conduit body and through the conduit to the operator. **Image 7A**
3. Insert the hood assembly into the conduit body with the (2) #8-32 pan head screws that came with the conduit body assembly. **Image 7B**
4. Using a 3/4" male threaded conduit fitting, connect the conduit body to the conduit.



**Image 8**  
Conduit body and hood assembly

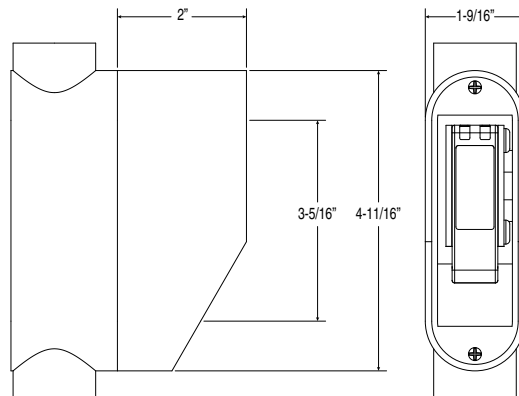
5. Complete the wiring to the operator following the **photo eye installation instructions** and **operator manual** and apply power.
6. Align the photo eye with the accompanying photo eye or reflector using the swivel bracket arm.
7. When aligned, secure the eye into position by tightening the #10 x 1-1/4" pan head screw. (see Assembly, step 7) **Image 4C**
8. Install conduit body cap onto top opening. **Image 8**
  - Note: Teflon tape or plumber's adhesive can be applied to the conduit body cap if a water-tight seal is desired.

#### IV. TECH SUPPORT

For additional assistance, contact Miller Edge Tech Support: 800-220-3343

#### V. SPECIFICATIONS

Dimensions	1-9/16"W x 4-11/16"H x 2"D
Weight	8 oz.
Materials	Hood/bracket assembly: Polycarbonate Conduit body/cap: Aluminum



#### VI. WARRANTY

The **Photo Eye Conduit Enclosure Kit (PE-CON-K10)** carries a **2-year warranty** from date of shipment from Miller Edge for credit or replacement. This warranty applies to normal use, which is found to have defective materials or workmanship, as determined solely by an authorized factory representative. This warranty is void where evidence of misuse or abuse is present. This warranty covers repair or replacement of the purchased product only; product installation/labor charges are not covered. Miller Edge manufactures its products to meet stringent specifications and cannot assume responsibility for those consequences arising from improper installation or misuse. Installation instructions and testing procedures provided by Miller Edge must be followed for proper operation and maintenance.